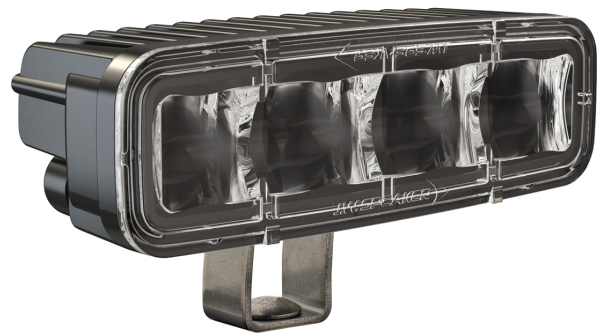


# LED Safety Lights 'Keep Out Zone' – Model 793

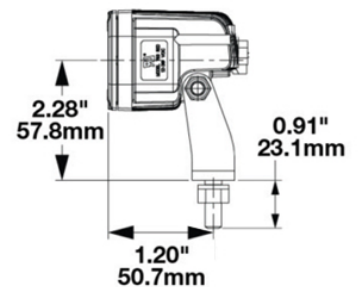
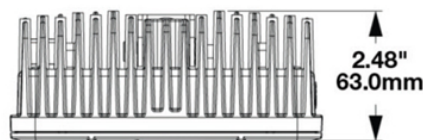
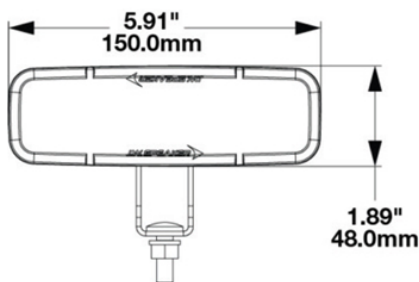
## 1603881

### Product Information

|                                      |  |
|--------------------------------------|--|
| <b>Description</b>                   | Model 793 - 48/110V LED Safety Light - Blue (Long Bracket) |
| <b>Height</b>                        | 48.00 mm / 1.89 in   |
| <b>Width</b>                         | 150.00 mm / 5.91 in  |
| <b>Depth</b>                         | 63.00 mm / 2.48 in   |
| <b>Shape</b>                         | Rectangular  |
| <b>Outer Lens Material</b>           | Polycarbonate  |
| <b>Outer Lens Color</b>              | Clear  |
| <b>Housing Color</b>                 | Black  |
| <b>Bezel Color</b>                   | Black  |
| <b>Mounting Hardware Description</b> | (x1) 5/16"-18 x 1.00" Mounting Bolt Bracket                |
| <b>Minimum Operating Temperature</b> | -40 °C   |
| <b>Maximum Operating Temperature</b> | 65 °C  |
| <b>Connector or Wiring</b>           | Deutsch DT04-2P  |
| <b>Mating Connector</b>              | Deutsch DT06-2S with harness included with flying leads    |
| <b>Product Weight</b>                | 0.87 lbs / 0.39 kgs  |
| <b>Shipping Weight</b>               | 1.10 lbs / 0.5 kgs   |



### Product Dimensions

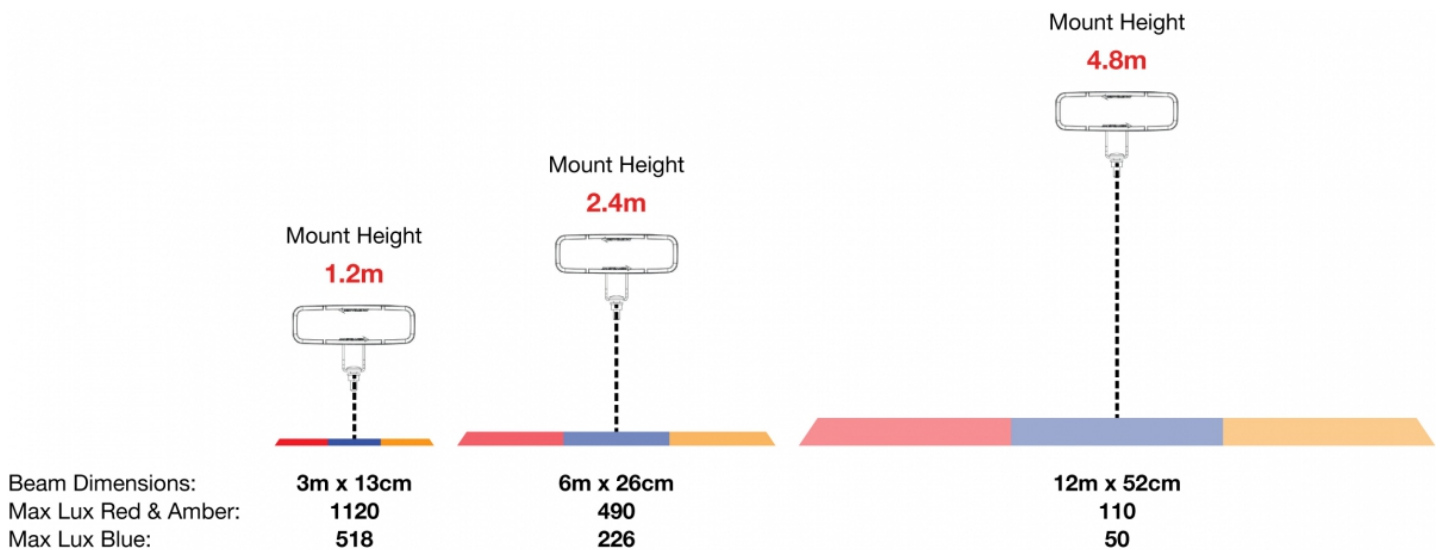


## Electrical Specifications

|                                   |                                       |
|-----------------------------------|---------------------------------------|
| <b>Input Voltage</b>              | 48-110V DC                            |
| <b>Transient Spike Protection</b> | 330V Peak @ 1 HZ-100 Pulses           |
| <b>Black Wire</b>                 | Ground                                |
| <b>Red Wire</b>                   | Power                                 |
| <b>Current Draw</b>               | 0.35A @ 48V DC (Maximum Current Draw) |

## Photometric Specifications

|                               |                         |
|-------------------------------|-------------------------|
| <b>Raw Lumen Output</b>       | 496                     |
| <b>Effective Lumen Output</b> | 110                     |
| <b>Beam Pattern(s)</b>        | Warning - Keep Out Zone |



## Additional Specifications

|                      |   |
|----------------------|---|
| <b>IP Rating</b>     | IP69K   |
| <b>Warranty</b>      | Please refer to the Warranty Statement which is available for download on the website |
| <b>Certification</b> | UL Recognised, Tested to ECE Reg 10 (Radiated Emissions Only)                         |
| <b>Pack Quantity</b> | 1   |