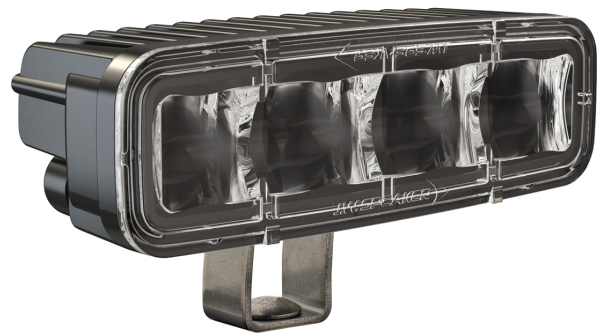


LED Safety Lights 'Keep Out Zone' – Model 793

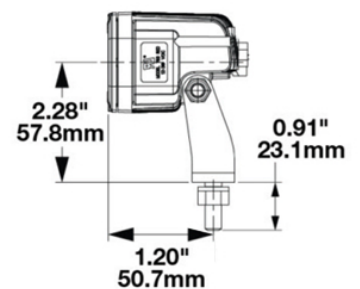
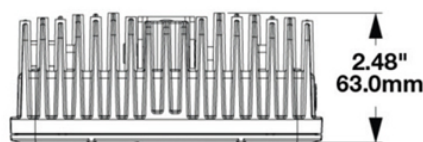
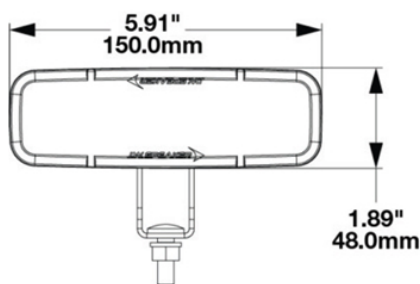
1603781

Product Information

Description	Model 793 - 12/36V LED Safety Light - Amber (Long Bracket)
Height	48.00 mm / 1.89 in
Width	150.00 mm / 5.91 in
Depth	63.00 mm / 2.48 in
Shape	Rectangular
Outer Lens Material	Polycarbonate
Outer Lens Color	Clear
Housing Color	Black
Bezel Color	Black
Mounting Hardware Description	(x1) 5/16"-18 x 1.00" Mounting Bolt Bracket
Minimum Operating Temperature	-40 °C
Maximum Operating Temperature	65 °C
Connector or Wiring	Deutsch DT04-2P
Mating Connector	Deutsch DT06-2S with harness included with flying leads
Product Weight	0.87 lbs / 0.39 kgs
Shipping Weight	1.10 lbs / 0.5 kgs



Product Dimensions

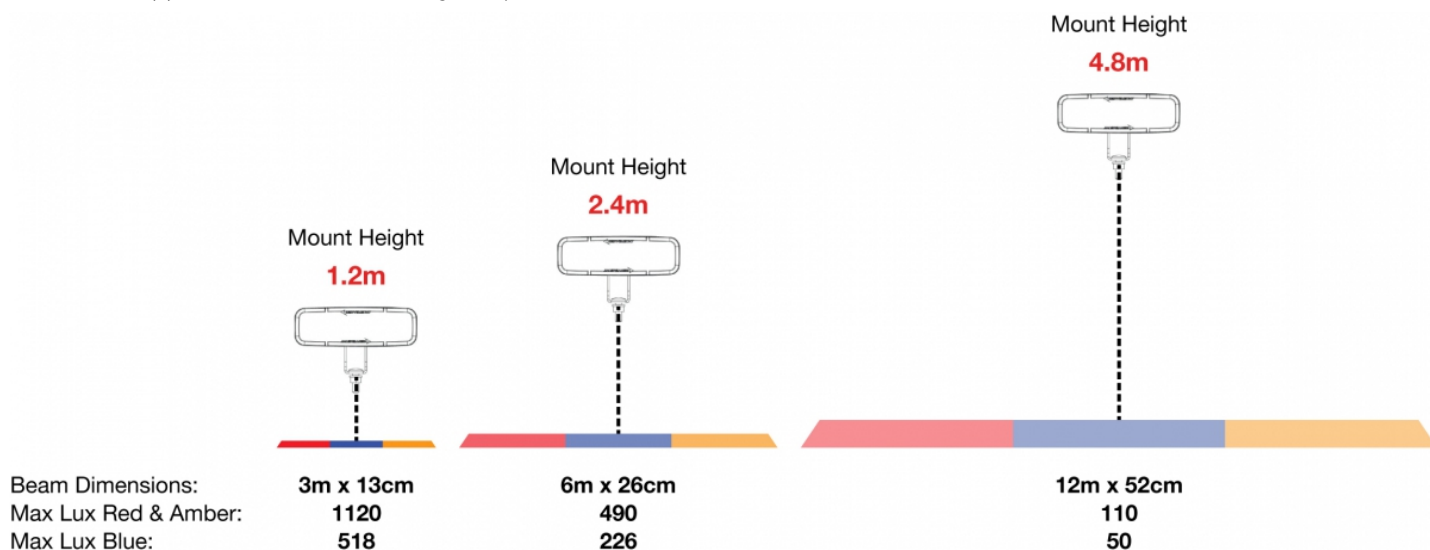


Electrical Specifications

Input Voltage	12-36V DC
Transient Spike Protection	330V Peak @ 1 HZ-100 Pulses
Black Wire	Ground
Red Wire	Power
Current Draw	1.60A @ 12V DC (Maximum Current Draw)

Photometric Specifications

Raw Lumen Output	496
Effective Lumen Output	110
Beam Pattern(s)	Warning - Keep Out Zone



Additional Specifications

IP Rating	IP69K
Warranty	Please refer to the Warranty Statement which is available for download on the website
Certification	UL Recognised, Tested to ECE Reg 10 (Radiated Emissions Only)
Pack Quantity	1